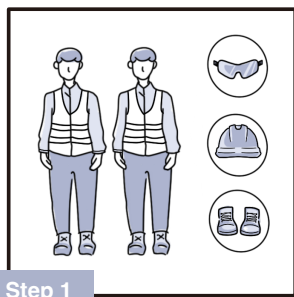


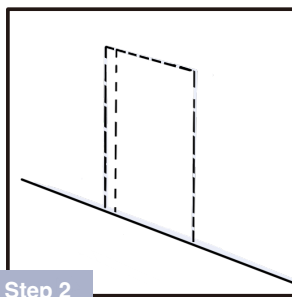
3-Side Frame Internal Door Installation Instruction



Step 1

Wear appropriate PPE (Personal Protective Equipment) such as gloves, safety goggles, and steel-toe boots.

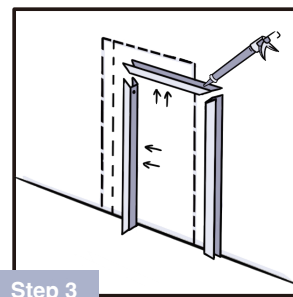
This metal door is heavy; it is recommended to have a minimum of 2 people for the installation.



Step 2

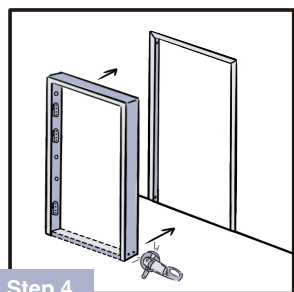
Measure the door frame dimensions.
Cut out the wall according to the measured dimensions to fit the C channel and Door frame.

Cut the C channel for the wall opening.



Step 3

Apply silicone inside the C channel, then install the C channel to the wall but do not secure it.

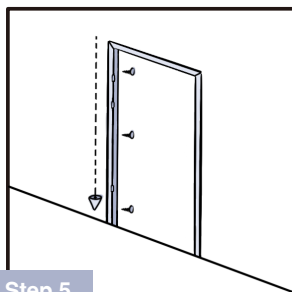


Step 4

Cut the bottom temporary frame before installation.

Remove the door leaf from the frame.

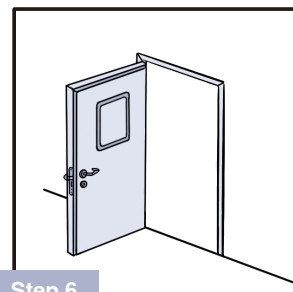
Push the door frame into the wall opening.



Step 5

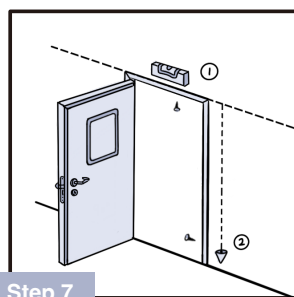
Adjust the door frame and keep the hinge side vertically aligned.

Secure the hinge side frame to the C channel.



Step 6

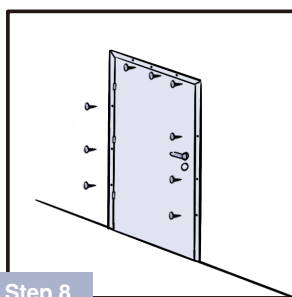
Hang the door leaf on the frame.



Step 7

Re-check the level and vertical alignment of the door frame and leaf, and adjust the C channels.

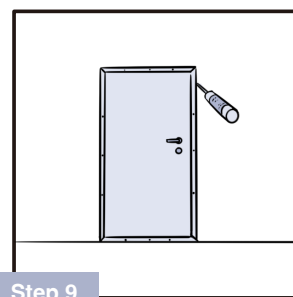
Continue securing the frame to the C channels with screws.



Step 8

Secure the C channel to the wall with rivets/screws if necessary.

Install all hardware: door locks and handles.



Step 9

Remove any excess packers.
Open and close the door several times to check for smooth operation.

Apply silicone around the outside perimeter of the frame and C channel to the wall to seal it.

Remove the protective film from the door and clean it.