

Insulated Sectional Doors



Engineered and designed in Australia, the Motisan Insulated Sectional Door is the ultimate solution for thermal efficiency, durability, and style. Perfect for residential, commercial, and industrial applications, it's built to meet the highest standards.

KEY FEATURES

Thermal Efficiency

- Thermal insulated panels ensure superior insulation performance and energy savings.

Durability

- Galvanized steel with UV-resistant powder coating ensures long-lasting durability.

Smooth Operation

- Precision-engineered for quiet and smooth operation.

Aesthetic Appeal

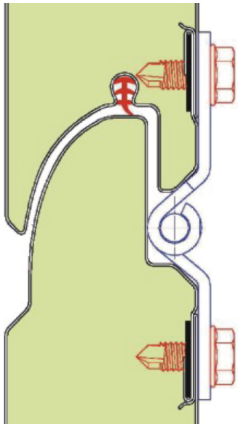
- Available in stylish colors and view windows to enhance any setting.

Safety

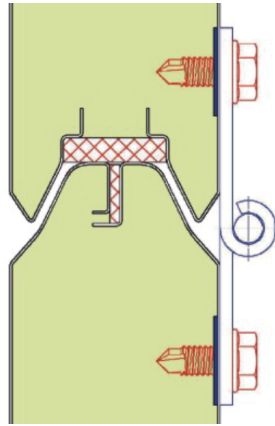
- Meets EN13241-1, CE standards with finger-safe design, spring break safety device, and other optional safety control devices.

WHAT MAKES OURS DIFFERENT

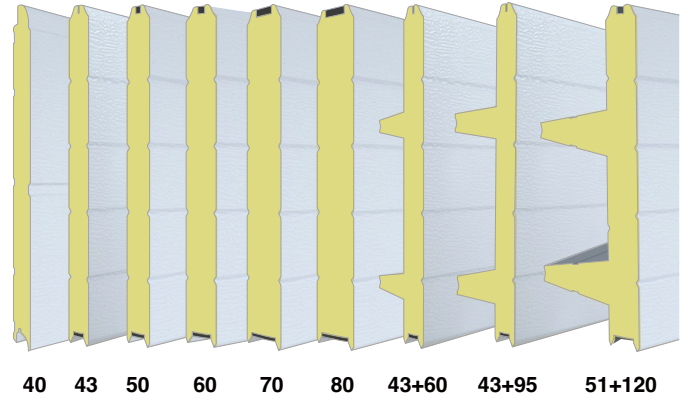
PANELS



Finger safe panel



American standard break bridge thermal insulation door panel



40 43 50 60 70 80 43+60 43+95 51+120

High-density ($\geq 48\text{kg/m}^3$) PU panels with BlueScope pre-coating galvanized steel for long-lasting performance. Backed by a 10-year warranty.

Wide range of panel options, including EN finger-safe, 40-80mm thermal break, and wind-brace panels. long lasting. 10 years warranty.

COLOUR



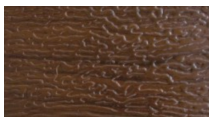
White RAL9016



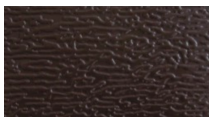
RAL9006 Silver Grey



Golden Oak



Black Walnut



Brown RAL8017



RAL7016 coal ash

More colour options available upon request

WINDOWS



Type A1 Type A2 Type A3 Type A4 Type A5 Type A6 Type A7



Type B1



Type B2



Type B3



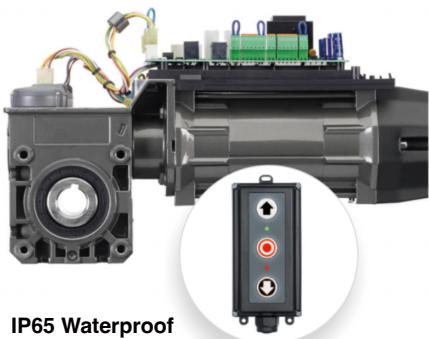
Type B4



Type C1

Type C2

MOTOR



IP65 Waterproof

Made in Germany Marantec, smooth and reliable operation, featuring strong static torque to hold the door in emergency situations.